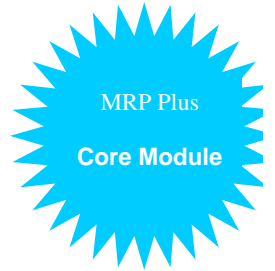


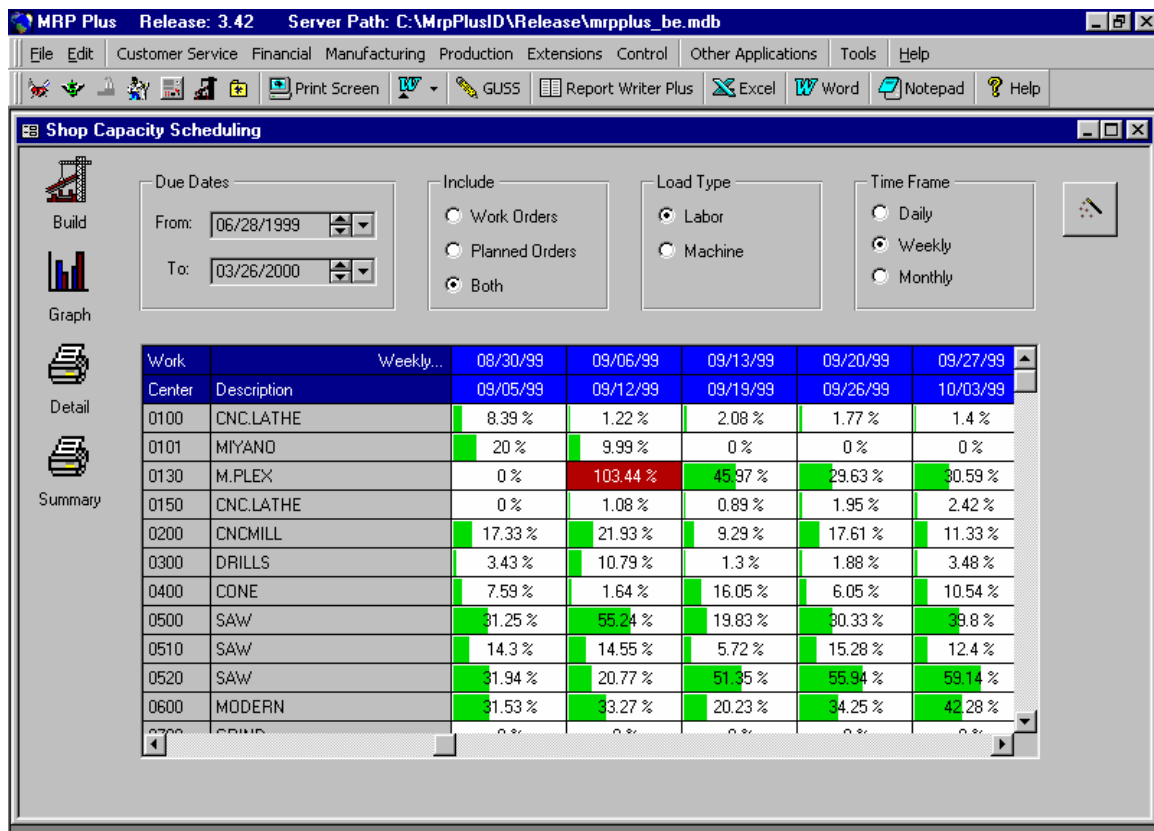
Feature Checklist

Shop Capacity Scheduling



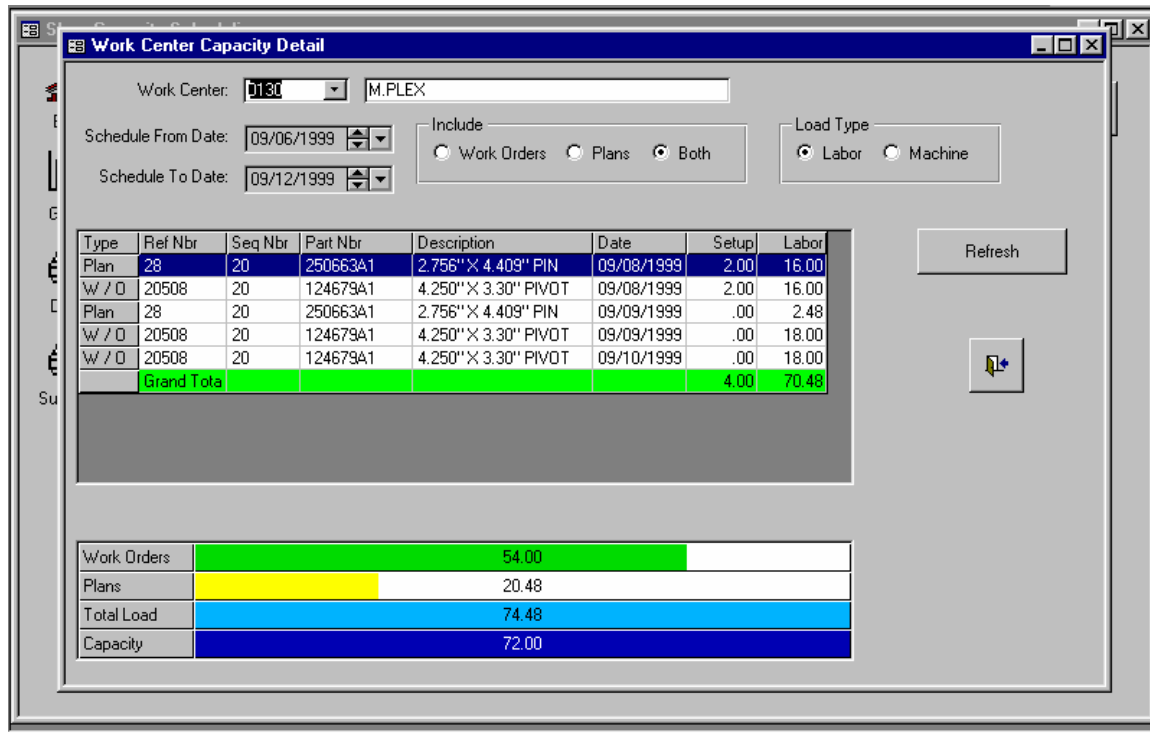
This module displays a graphical representation of Work Center labor or machine loading by Planned Orders and/or Work Orders within specified date ranges. Selection by Product Families and Automatic re-scheduling of past due work orders is provided for on the initial selection screen. It works in conjunction with the Production Sub-system to provide greater control of your Shop Floor Control.

Shop Capacity Scheduling



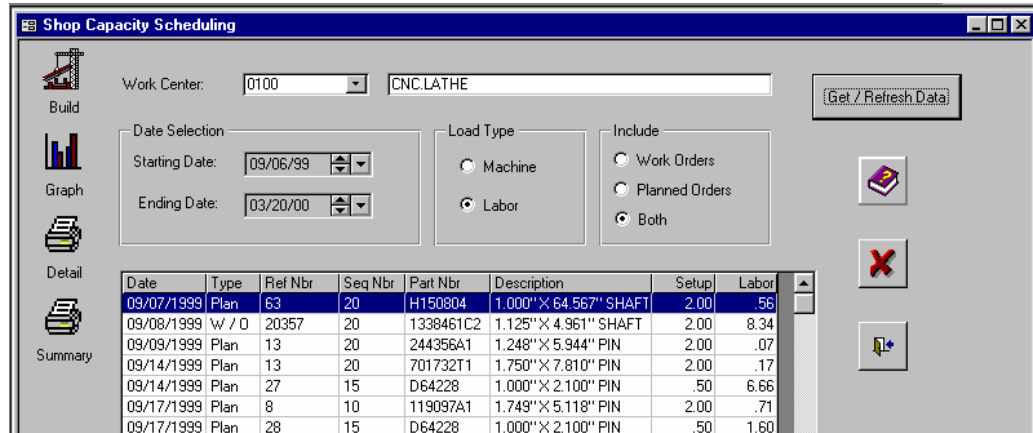
This screen graphically displays the work center load based on a time frame entered. A Red graph represents a work center that is over capacity for the time frame selected (daily, weekly, or monthly). A Yellow graph represents a work center that has exceeded the reserve percentage, but not its maximum. A Green graph represents a work center that has not yet reached its reserve percentage.

The scheduler may drill-into any cell on the graph to check the detail for the period.



Changes can then be made to individual routing steps in order to accommodate capacity requirements limitations. Both a detailed and summary views can be displayed by work center by using the bottom two corresponding buttons from the main screen.

Detailed View:



Summary View:

