

Feature Checklist

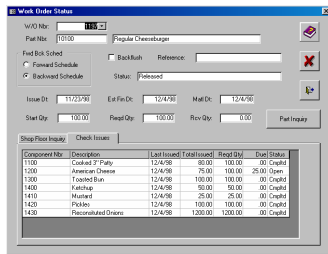
Manufacturing Control



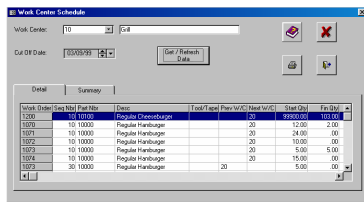
Enters, tracks and reschedules purchase orders, maintains vendor profiles, records movement of material and labor on the shop floor, and schedules and loads the shop work flow.

Shop Floor Control

- Produces a shop packet including picklist and route sheet.
- Supports forward or backward scheduling of work orders.
- On-line dispatch list and detailed status of work orders are available.



- Detailed and summary work center loads are available.

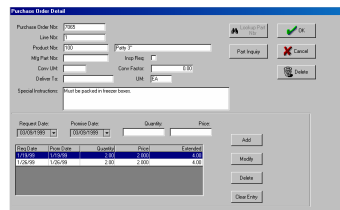


- Time collection may be captured either on shop floor or by timecard entry.

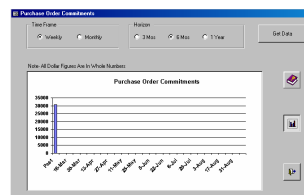


Purchase Order Control

- Detailed vendor profile is maintained.
- Multiple plants profiles can be established for a vendor.
- Allows entry of purchase orders.
- Multiple items and deliveries are supported per purchase order.

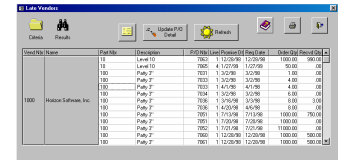


- Tracks outplant operations on work orders.
- Optionally purchase material directly to a work order.
- Cut purchase orders for stock, outplant or miscellaneous items.
- Purchase commitments aging available.



- Has on-line inquiry of purchase order status.
- Supports purchasing in any unit of measure with conversion factor.
- Purchase line items may be manually closed.

- Past Due worksheets are available by part number or vendor. Each support buyer notes and the ability to change due dates and/or quantities.
- Vendor Web Sites can be accessed through past due worksheets.



- Archives purchase orders and keeps vital delivery statistics.
- Optionally code receipts for inspection.
- Reopens purchase order when deliveries are rejected. Purchase order remains closed if items are scrapped.
- Supports unplanned receipts.
- Maintains an average and last cost for received parts.
- Ordered history inquiry available. Shows vendor, quantity, and pricing information for a part number.



- Ties receiver records to accounts payable for reconciliation.